

# SAMSUNG

## THE FRAME MOUNTING

### GUIDE



#### 1. PREPARATION: TOOLS AND MATERIALS



- Samsung "The Frame" TV
- No Gap Wall Mount (usually included with the TV)
- Drill
- Level
- Stud finder
- Phillips screwdriver
- Pencil or marker

#### 2. CHOOSE THE LOCATION:

- Decide where you want to mount the TV. Consider factors like viewing angle, sunlight, and wall space.
- Use a stud finder to locate the wall studs. It's crucial to mount the TV on studs for stability.



#### 3. ATTACH THE MOUNTING BRACKETS TO THE TV:



- Lay the TV face-down on a soft, flat surface to prevent scratches.
- Attach the two vertical mounting brackets to the back of the TV using the provided screws. Ensure they are securely tightened.

#### 4. MARK THE WALL:

- Hold the wall plate (the large horizontal piece) against the wall where you want the TV to hang.
- Use a level to ensure the wall plate is straight.
- Mark the drill holes using a pencil or marker, ensuring they align with the wall studs.



#### 5. DRILL THE HOLES:



- Drill pilot holes where you've marked on the wall. The depth and width of the holes will depend on the type of wall and the screws provided.

# SAMSUNG THE FRAME MOUNTING GUIDE



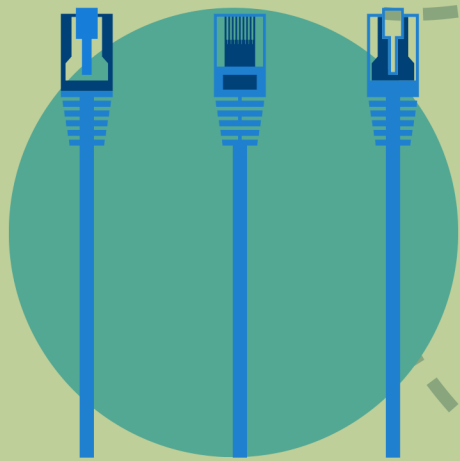
## 6. ATTACH THE WALL PLATE:

- Align the wall plate with the drilled holes.
- Use the provided screws and a Phillips screwdriver (or drill with a Phillips bit) to secure the wall plate to the wall. Ensure it's tightly fastened to the studs.



## 7. HANG THE TV:

- Connect the invisible cable to the TV.
- Carefully lift the TV and align the mounting brackets with the wall plate.
- Slide the TV downwards until the brackets lock into place on the wall plate.



## 8. CONNECT CABLES:

- Samsung "The Frame" TV uses a One Connect Box, which means only one cable connects to the TV.
- Connect the One Invisible Connection cable to the One Connect Box.
- Connect all other devices (e.g., Blu-ray player, game console) to the One Connect Box.



## 9. SAFETY CHECK:

- Gently try to move the TV to ensure it's securely mounted and doesn't wobble.
- 



## 10. ENJOY YOUR TV:

- Turn on the TV, set it up if it's your first time, and enjoy watching!

**NOTE: ALWAYS REFER TO THE MANUFACTURER'S INSTRUCTIONS THAT COME WITH THE TV AND WALL MOUNT. DIFFERENT MODELS OR VERSIONS MIGHT HAVE SPECIFIC STEPS OR REQUIREMENTS. IF YOU'RE UNSURE ABOUT ANY STEP OR DON'T HAVE THE NECESSARY TOOLS, CONSIDER HIRING A PROFESSIONAL TO MOUNT THE TV FOR YOU.**